



Cable ID: PCF6-10CC-0500-G

Date / Time: 06/10/2019 01:19:17 PM

Headroom 2.4 dB (NEXT 12-36)

Test Limit: TIA Cat 6 Channel

Cable Type: Cat 6 F/UTP

NVP: 69.0%

Software Version: V6.1 Build 3

Limits Version: V7.1

Calibration Start Date:

Main (Module): 12/03/2018

Remote (Module): 12/03/2018

Test Summary: PASS

Model: DSX-8000

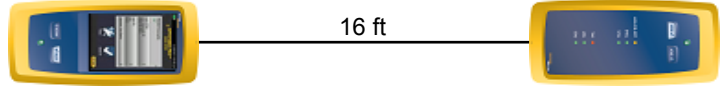
Main S/N: 1820302

Remote S/N: 1824298

Main Adapter: DSX-CHA804

Remote Adapter: DSX-CHA804

Length (ft), Limit 328	[Pair 78]	16
Prop. Delay (ns), Limit 555	[Pair 36]	25
Delay Skew (ns), Limit 50	[Pair 12]	1
Resistance (ohms)	[Pair 45]	3.65
Insertion Loss Margin (dB)	[Pair 12]	31.5
Frequency (MHz)	[Pair 12]	234.0
Limit (dB)	[Pair 12]	34.6



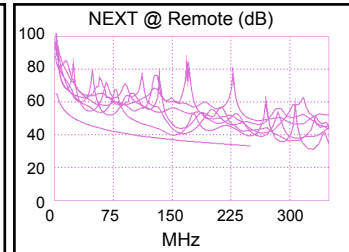
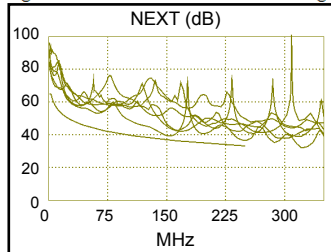
Wire Map (T568B)

PASS

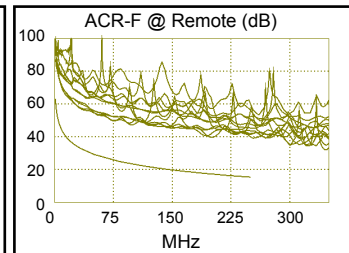
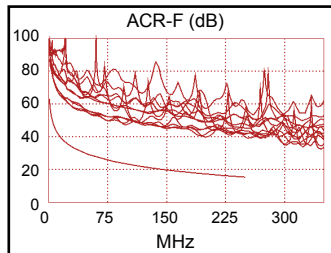


Worst Case Margin Worst Case Value

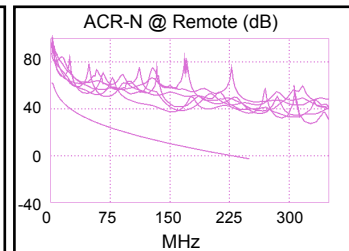
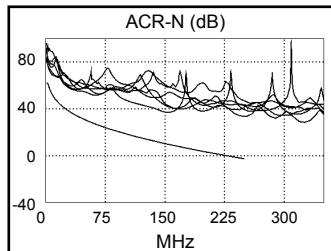
PASS	MAIN	SR	MAIN	SR
Worst Pair	12-36	12-36	12-36	12-36
NEXT (dB)	2.4	2.8	3.4	6.1
Freq. (MHz)	151.5	151.5	250.0	250.0
Limit (dB)	36.9	36.9	33.1	33.1
Worst Pair	12	12	12	36
PS NEXT (dB)	4.1	3.8	5.0	6.4
Freq. (MHz)	155.5	155.5	250.0	249.5
Limit (dB)	33.8	33.8	30.2	30.2



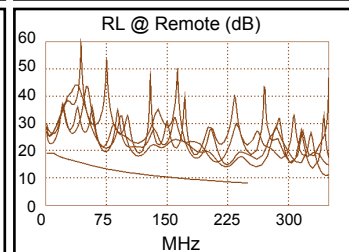
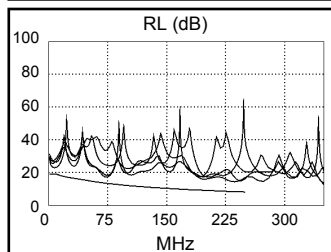
PASS	MAIN	SR	MAIN	SR
Worst Pair	36-78	78-36	36-78	78-36
ACR-F (dB)	22.4	22.2	22.5	22.3
Freq. (MHz)	199.5	199.5	200.0	200.0
Limit (dB)	17.3	17.3	17.2	17.2
Worst Pair	36	36	36	36
PS ACR-F (dB)	24.4	24.1	25.9	25.2
Freq. (MHz)	194.5	199.5	250.0	242.0
Limit (dB)	14.5	14.3	12.3	12.6



N/A	MAIN	SR	MAIN	SR
Worst Pair	12-45	12-45	12-36	12-36
ACR-N (dB)	14.6	20.2	36.3	39.0
Freq. (MHz)	3.3	11.6	250.0	250.0
Limit (dB)	60.9	48.7	-2.8	-2.8
Worst Pair	45	45	12	36
PS ACR-N (dB)	14.4	20.1	38.0	39.3
Freq. (MHz)	3.3	11.4	250.0	249.5
Limit (dB)	58.4	46.3	-5.8	-5.7



PASS	MAIN	SR	MAIN	SR
Worst Pair	12	12	12	12
RL (dB)	6.0	5.5	6.1	5.6
Freq. (MHz)	237.0	221.0	238.0	225.5
Limit (dB)	8.3	8.6	8.2	8.5



Compliant Network Standards:

10BASE-T	100BASE-TX	100BASE-T4
1000BASE-T	2.5GBASE-T	5GBASE-T
ATM-25	ATM-51	ATM-155
100VG-AnyLan	TR-4	TR-16 Active
TR-16 Passive		