



Cable ID/ Test ID: PCU6-10CU-1500-BK-001

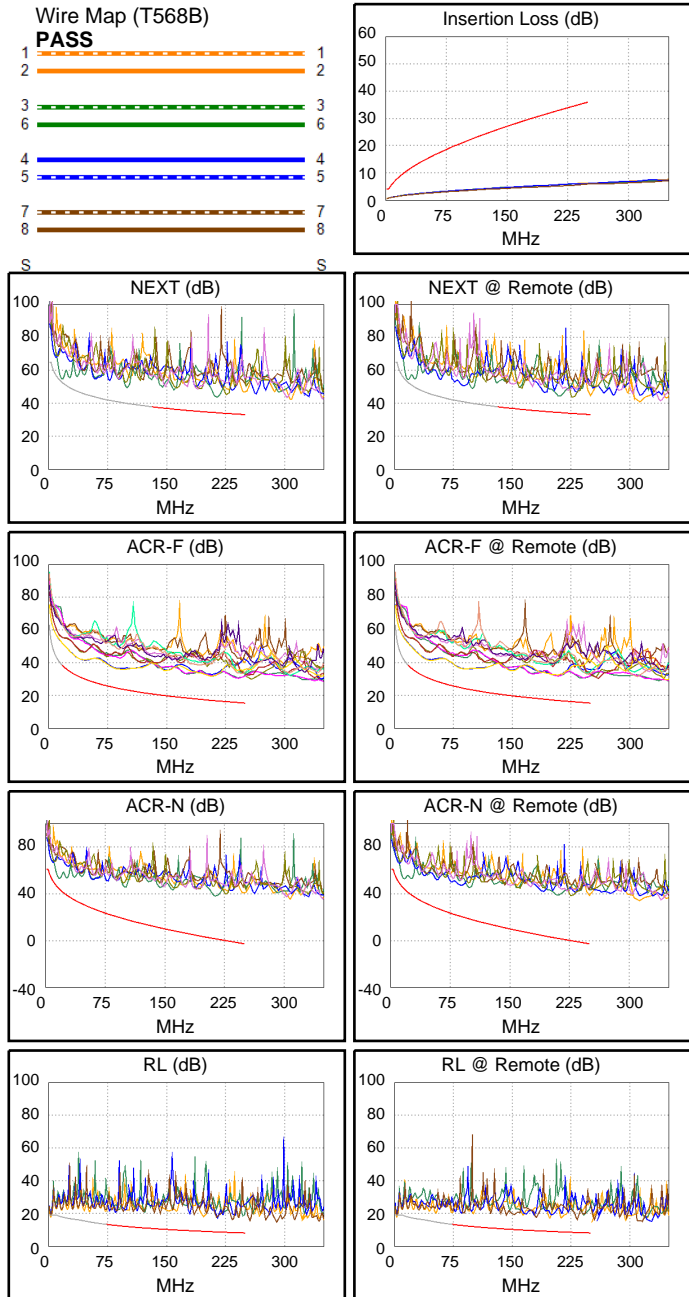
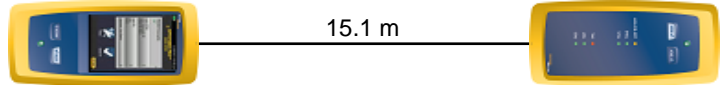
Test Limit: ISO11801 Channel Class E
Limits Version: V7.11
Date / Time: 2026/01/26 11:16:00
Operator: Lanberg
Headroom 9.3 dB (NEXT 1,2-4,5)
Cable Type: Cat 6 U/UTP
NVP: 69.0%

Main: Versiv
S/N: 24410021
Software Version: V6.14 Build 9
Calibration Date: 2025/05/28
Adapter: DSX-602 (DSX-CHA004)
S/N: 25073277

Test Summary: PASS

Remote: Versiv
S/N: 24250049
Software Version: V6.14 Build 9
Calibration Date: 2025/05/28
Adapter: DSX-602R (DSX-CHA004)
S/N: 25073276

Length (m), Limit 100.0	[Pair 1,2]	15.1
Prop. Delay (ns), Limit 555	[Pair 3,6]	75
Delay Skew (ns), Limit 50	[Pair 3,6]	2
Resistance (ohms), Limit 25.00	[Pair 3,6]	3.93
Insertion Loss Margin (dB)	[Pair 1,2]	29.3
Frequency (MHz)	[Pair 1,2]	243.0
Limit (dB)	[Pair 1,2]	35.4



Worst Case Margin Worst Case Value

PASS	MAIN	SR	MAIN	SR
Worst Pair	1,2-4,5	3,6-7,8	1,2-4,5	3,6-7,8
NEXT (dB)	9.3	9.7	9.3	9.7
Freq. (MHz)	214.0	228.0	214.0	228.0
Limit (dB)	34.3	33.8	34.3	33.8
Worst Pair	4,5	7,8	4,5	7,8
PS NEXT (dB)	11.8	10.8	11.9	10.9
Freq. (MHz)	213.5	228.0	214.0	228.5
Limit (dB)	31.4	30.9	31.3	30.8

PASS	MAIN	SR	MAIN	SR
Worst Pair	1,2-7,8	7,8-1,2	4,5-1,2	1,2-4,5
ACR-F (dB)	11.0	10.8	14.9	14.8
Freq. (MHz)	40.8	39.3	241.5	238.0
Limit (dB)	31.1	31.4	15.6	15.7
Worst Pair	1,2	1,2	4,5	4,5
PS ACR-F (dB)	13.6	13.5	15.6	15.1
Freq. (MHz)	39.8	39.3	246.0	245.5
Limit (dB)	28.3	28.4	12.4	12.5

PASS	MAIN	SR	MAIN	SR
Worst Pair	1,2-4,5	1,2-4,5	1,2-4,5	3,6-7,8
ACR-N (dB)	8.8	8.3	36.6	38.6
Freq. (MHz)	16.4	16.4	214.0	228.0
Limit (dB)	44.7	44.7	1.3	-0.3
Worst Pair	1,2	1,2	3,6	7,8
PS ACR-N (dB)	11.4	11.0	40.8	40.1
Freq. (MHz)	16.4	16.8	228.0	230.5
Limit (dB)	42.0	41.8	-3.3	-3.6

PASS	MAIN	SR	MAIN	SR
Worst Pair	1,2	1,2	7,8	7,8
RL (dB)	7.6	6.8	7.8	8.0
Freq. (MHz)	72.8	73.3	234.0	233.5
Limit (dB)	13.4	13.4	8.3	8.3

Compliant Network Standards:
 10BASE-T 100BASE-TX 100BASE-T4
 1000BASE-T 2.5GBASE-T 5GBASE-T
 ATM-25 ATM-51 ATM-155
 100VG-AnyLan TR-4 TR-16 Active
 TR-16 Passive