



Cable ID/ Test ID: PCU6-10CU-0050-W-001

Test Limit: ISO11801 Channel Class E

Limits Version: V7.11

Date / Time: 2026/01/26 18:03:40

Operator: Lanberg

Headroom 18.1 dB (NEXT 3,6-4,5)

Cable Type: Cat 6A U/UTP

NVP: 68.2%

Main: Versiv

S/N: 24410021

Software Version: V6.14 Build 9

Calibration Date: 2025/05/28

Adapter: DSX-602 (DSX-CHA004)

S/N: 25073277

Test Summary: PASS

Remote: Versiv

S/N: 24250049

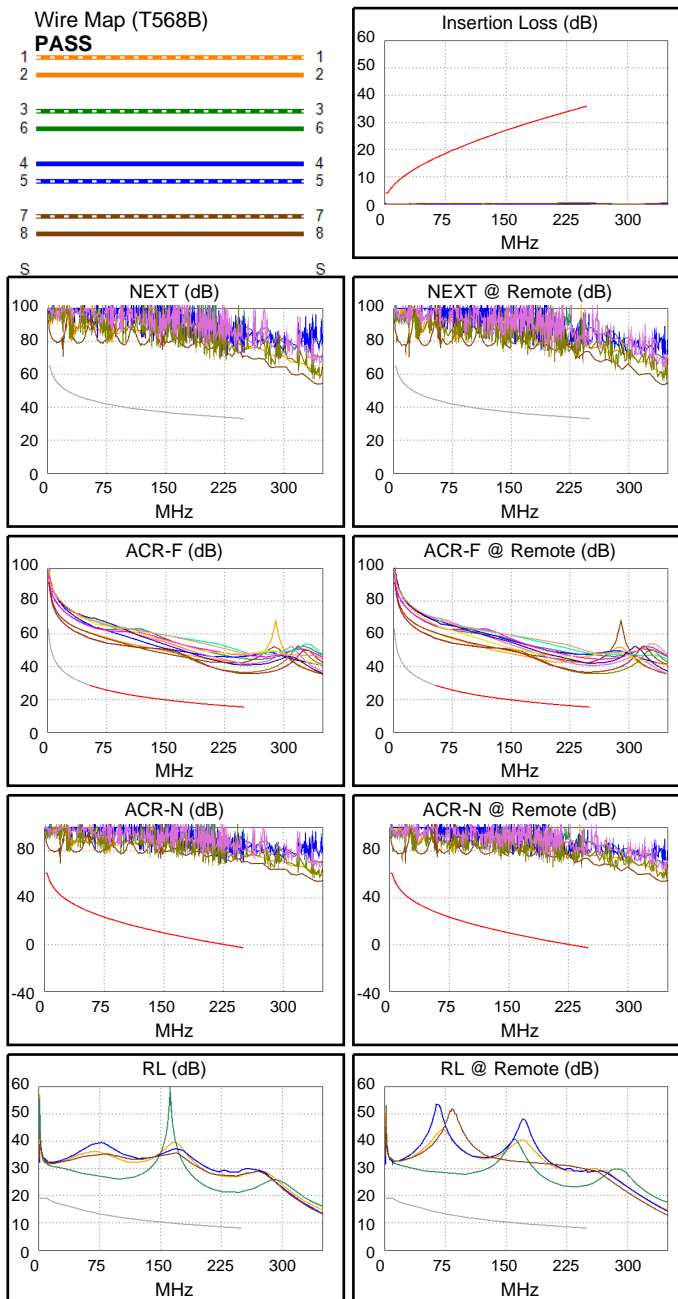
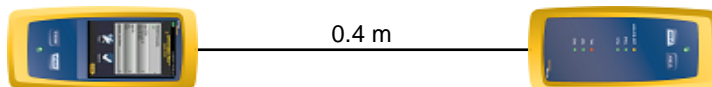
Software Version: V6.14 Build 9

Calibration Date: 2025/05/28

Adapter: DSX-602R (DSX-CHA004)

S/N: 25073276

Length (m), Limit 100.0	[Pair 1,2]	0.4
Prop. Delay (ns), Limit 555	[Pair 1,2]	2
Delay Skew (ns), Limit 50	[Pair 1,2]	0
Resistance (ohms), Limit 25.00	[Pair 7,8]	0.14
Insertion Loss Margin (dB)	[Pair 7,8]	35.6
Frequency (MHz)	[Pair 7,8]	250.0
Limit (dB)	[Pair 7,8]	35.9



Worst Case Margin Worst Case Value

N/A	MAIN	SR	MAIN	SR
Worst Pair	3,6-4,5	3,6-4,5	3,6-4,5	3,6-4,5
NEXT (dB)	20.3	18.1	36.6	35.4
Freq. (MHz)	2.9	3.9	236.0	235.5
Limit (dB)	65.0	63.3	33.5	33.6
Worst Pair	3,6	3,6	3,6	3,6
PS NEXT (dB)	22.1	20.3	36.7	36.2
Freq. (MHz)	3.9	3.9	227.0	235.5
Limit (dB)	60.8	60.8	30.9	30.6

PASS	MAIN	SR	MAIN	SR
Worst Pair	4,5-3,6	3,6-4,5	4,5-3,6	3,6-4,5
ACR-F (dB)	20.4	20.3	20.5	20.4
Freq. (MHz)	248.5	248.5	250.0	250.0
Limit (dB)	15.4	15.4	15.3	15.3
Worst Pair	3,6	3,6	3,6	3,6
PS ACR-F (dB)	21.5	22.1	21.7	22.4
Freq. (MHz)	242.0	242.5	250.0	249.5
Limit (dB)	12.6	12.6	12.3	12.3

PASS	MAIN	SR	MAIN	SR
Worst Pair	3,6-4,5	3,6-4,5	3,6-4,5	3,6-4,5
ACR-N (dB)	24.3	22.3	71.1	70.0
Freq. (MHz)	2.9	3.9	236.0	235.5
Limit (dB)	61.0	59.1	-1.2	-1.2
Worst Pair	3,6	3,6	3,6	3,6
PS ACR-N (dB)	26.1	24.5	70.7	70.8
Freq. (MHz)	2.9	3.9	227.0	235.5
Limit (dB)	58.0	56.6	-3.2	-4.1

N/A	MAIN	SR	MAIN	SR
Worst Pair	3,6	4,5	3,6	3,6
RL (dB)	12.4	12.4	13.0	15.0
Freq. (MHz)	12.3	1.0	245.0	238.0
Limit (dB)	18.6	19.0	8.1	8.2

Compliant Network Standards:
 10BASE-T 100BASE-TX 100BASE-T4
 1000BASE-T 2.5GBASE-T 5GBASE-T
 ATM-25 ATM-51 ATM-155
 100VG-AnyLan TR-4 TR-16 Active
 TR-16 Passive