



Cable ID/ Test ID: PCF6-10CC-0050-R-001

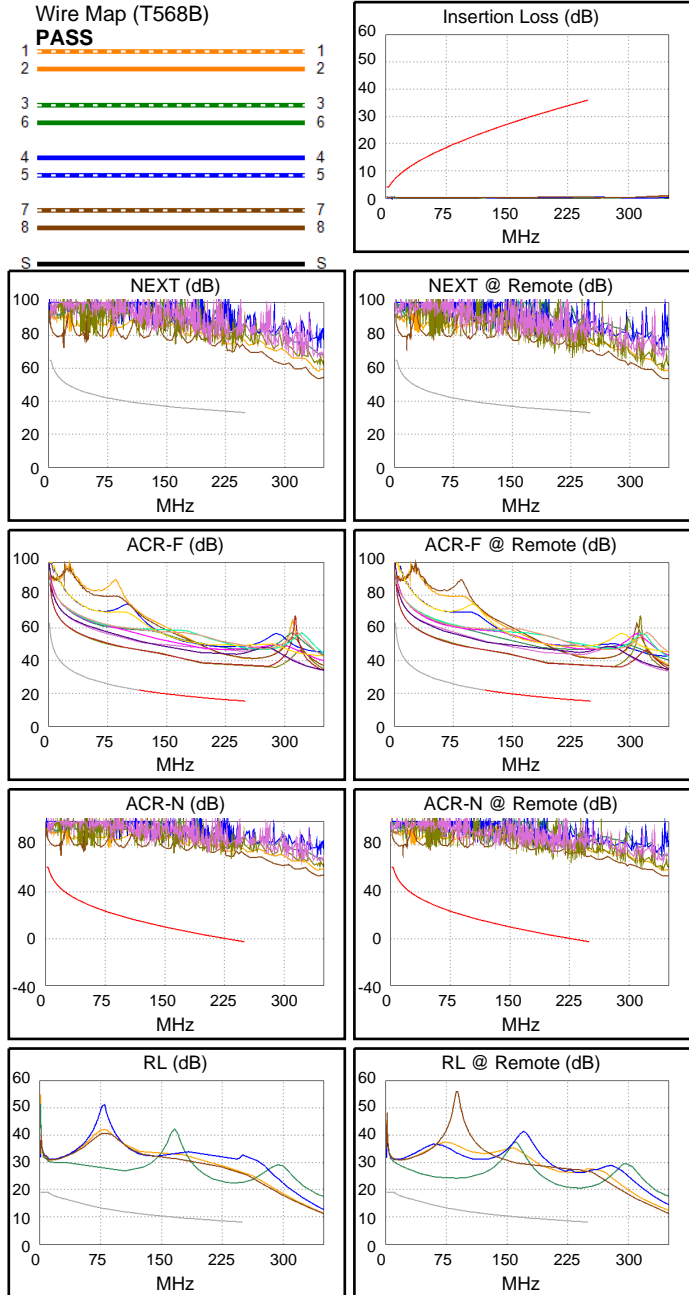
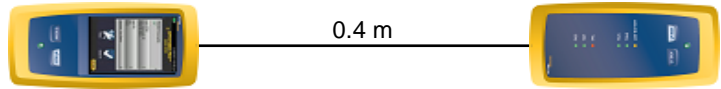
Test Limit: ISO11801 Channel Class E
Limits Version: V7.11
Date / Time: 2026/01/27 17:18:17
Operator: Lanberg
Headroom 19.1 dB (NEXT 3,6-4,5)
Cable Type: Cat 6 F/UTP
NVP: 70.0%

Main: Versiv
S/N: 24410021
Software Version: V6.14 Build 9
Calibration Date: 2025/05/28
Adapter: DSX-602 (DSX-CHA004)
S/N: 25073276

Test Summary: PASS

Remote: Versiv
S/N: 24250049
Software Version: V6.14 Build 9
Calibration Date: 2025/05/28
Adapter: DSX-602R (DSX-CHA004)
S/N: 25073277

| | | |
|--------------------------------|------------|-------|
| Length (m), Limit 100.0 | [Pair 1,2] | 0.4 |
| Prop. Delay (ns), Limit 555 | [Pair 1,2] | 2 |
| Delay Skew (ns), Limit 50 | [Pair 1,2] | 0 |
| Resistance (ohms), Limit 25.00 | [Pair 7,8] | 0.43 |
| | | |
| Insertion Loss Margin (dB) | [Pair 7,8] | 35.2 |
| Frequency (MHz) | [Pair 7,8] | 245.5 |
| Limit (dB) | [Pair 7,8] | 35.6 |



| | Worst Case Margin | | Worst Case Value | |
|----------------------|-------------------|---------|------------------|---------|
| N/A | MAIN | SR | MAIN | SR |
| Worst Pair | 3,6-4,5 | 3,6-4,5 | 3,6-4,5 | 3,6-4,5 |
| NEXT (dB) | 19.1 | 19.8 | 35.8 | 36.3 |
| Freq. (MHz) | 3.9 | 3.9 | 231.5 | 248.0 |
| Limit (dB) | 63.3 | 63.3 | 33.7 | 33.2 |
| Worst Pair | 3,6 | 3,6 | 3,6 | 3,6 |
| PS NEXT (dB) | 20.7 | 21.4 | 36.9 | 36.7 |
| Freq. (MHz) | 3.9 | 3.9 | 233.5 | 232.0 |
| Limit (dB) | 60.8 | 60.8 | 30.7 | 30.7 |
| PASS | MAIN | SR | MAIN | SR |
| Worst Pair | 3,6-4,5 | 4,5-3,6 | 3,6-4,5 | 4,5-3,6 |
| ACR-F (dB) | 18.2 | 18.3 | 18.3 | 18.4 |
| Freq. (MHz) | 248.5 | 248.5 | 250.0 | 249.5 |
| Limit (dB) | 15.4 | 15.4 | 15.3 | 15.3 |
| Worst Pair | 3,6 | 3,6 | 3,6 | 3,6 |
| PS ACR-F (dB) | 20.8 | 20.4 | 21.0 | 20.6 |
| Freq. (MHz) | 245.5 | 242.5 | 249.5 | 249.5 |
| Limit (dB) | 12.5 | 12.6 | 12.3 | 12.3 |
| PASS | MAIN | SR | MAIN | SR |
| Worst Pair | 3,6-4,5 | 3,6-4,5 | 3,6-4,5 | 3,6-4,5 |
| ACR-N (dB) | 23.3 | 24.0 | 69.9 | 71.8 |
| Freq. (MHz) | 3.9 | 3.9 | 231.5 | 248.0 |
| Limit (dB) | 59.1 | 59.1 | -0.7 | -2.6 |
| Worst Pair | 3,6 | 3,6 | 3,6 | 3,6 |
| PS ACR-N (dB) | 24.9 | 25.5 | 71.3 | 70.9 |
| Freq. (MHz) | 3.9 | 3.1 | 233.5 | 232.0 |
| Limit (dB) | 56.6 | 58.0 | -3.9 | -3.7 |
| N/A | MAIN | SR | MAIN | SR |
| Worst Pair | 3,6 | 3,6 | 3,6 | 3,6 |
| RL (dB) | 11.4 | 10.1 | 14.3 | 12.2 |
| Freq. (MHz) | 10.6 | 40.3 | 244.0 | 240.5 |
| Limit (dB) | 18.9 | 16.0 | 8.1 | 8.2 |

Compliant Network Standards:
 10BASE-T 100BASE-TX 100BASE-T4
 1000BASE-T 2.5GBASE-T 5GBASE-T
 ATM-25 ATM-51 ATM-155
 100VG-AnyLan TR-4 TR-16 Active
 TR-16 Passive