



### Cable ID/ Test ID: PCF6-10CC-1000-S-001

Test Limit: ISO11801 Channel Class E

Limits Version: V7.11

Date / Time: 2026/01/27 14:28:59

Operator: Lanberg

Headroom 3.4 dB (NEXT 3,6-4,5)

Cable Type: Cat 6 F/UTP

NVP: 70.0%

Main: Versiv

S/N: 24410021

Software Version: V6.14 Build 9

Calibration Date: 2025/05/28

Adapter: DSX-602 (DSX-CHA004)

S/N: 25073276

### Test Summary: PASS

Remote: Versiv

S/N: 24250049

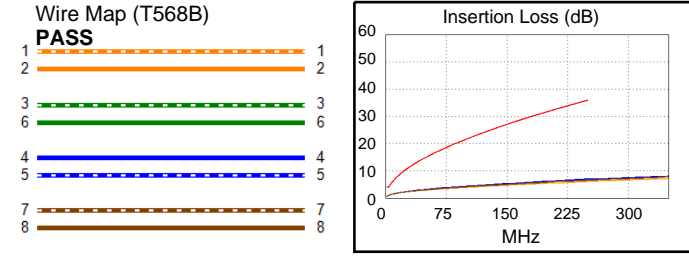
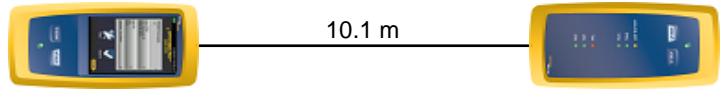
Software Version: V6.14 Build 9

Calibration Date: 2025/05/28

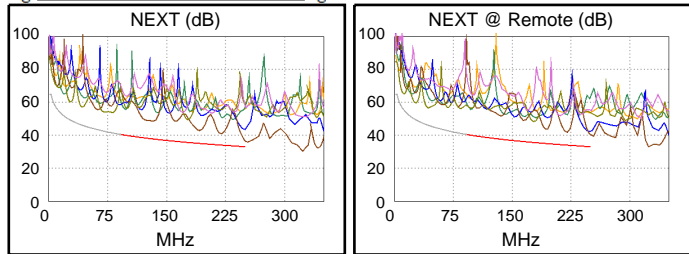
Adapter: DSX-602R (DSX-CHA004)

S/N: 25073277

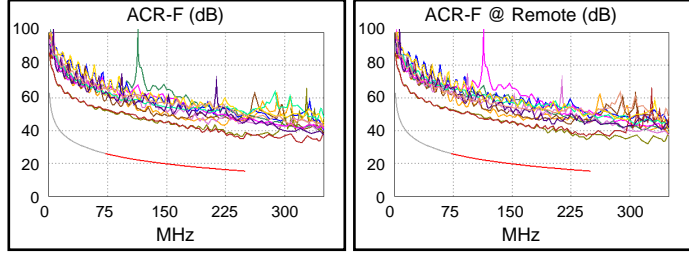
Length (m), Limit 100.0	[Pair 1,2]	10.1
Prop. Delay (ns), Limit 555	[Pair 4,5]	51
Delay Skew (ns), Limit 50	[Pair 3,6]	3
Resistance (ohms), Limit 25.00	[Pair 3,6]	6.61
Insertion Loss Margin (dB)	[Pair 4,5]	28.8
Frequency (MHz)	[Pair 4,5]	246.5
Limit (dB)	[Pair 4,5]	35.7



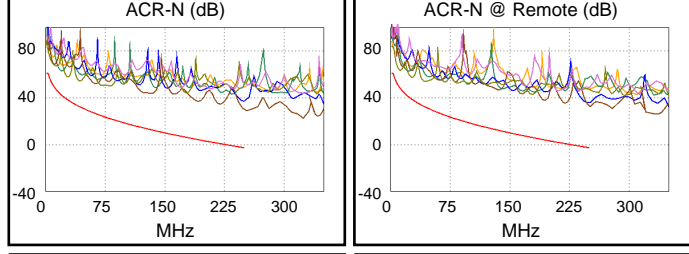
	Worst Case Margin		Worst Case Value	
PASS	MAIN	SR	MAIN	SR
Worst Pair	3,6-4,5	3,6-4,5	3,6-4,5	3,6-4,5
<b>NEXT (dB)</b>	3.4	6.8	3.4	6.8
Freq. (MHz)	250.0	250.0	250.0	250.0
Limit (dB)	33.1	33.1	33.1	33.1
Worst Pair	3,6	3,6	3,6	3,6
<b>PS NEXT (dB)</b>	6.3	9.4	6.3	9.4
Freq. (MHz)	250.0	250.0	250.0	250.0
Limit (dB)	30.2	30.2	30.2	30.2



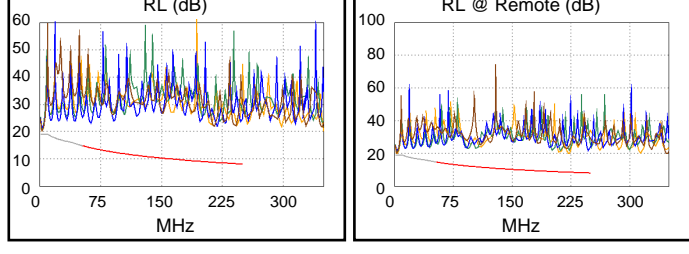
	Worst Case Margin		Worst Case Value	
PASS	MAIN	SR	MAIN	SR
Worst Pair	4,5-3,6	3,6-4,5	4,5-3,6	3,6-4,5
<b>ACR-F (dB)</b>	19.2	18.8	19.3	18.9
Freq. (MHz)	245.5	245.5	246.5	246.0
Limit (dB)	15.5	15.5	15.4	15.4
Worst Pair	3,6	4,5	3,6	4,5
<b>PS ACR-F (dB)</b>	21.5	21.4	21.6	21.5
Freq. (MHz)	245.5	245.5	247.0	246.0
Limit (dB)	12.5	12.5	12.4	12.4



	Worst Case Margin		Worst Case Value	
PASS	MAIN	SR	MAIN	SR
Worst Pair	3,6-7,8	3,6-7,8	3,6-4,5	3,6-4,5
<b>ACR-N (dB)</b>	17.6	14.5	32.5	35.9
Freq. (MHz)	7.6	10.4	250.0	250.0
Limit (dB)	52.8	49.6	-2.8	-2.8
Worst Pair	3,6	3,6	4,5	3,6
<b>PS ACR-N (dB)</b>	17.4	16.6	35.5	38.8
Freq. (MHz)	8.9	10.8	250.0	250.0
Limit (dB)	48.7	46.7	-5.8	-5.8



	Worst Case Margin		Worst Case Value	
PASS	MAIN	SR	MAIN	SR
Worst Pair	4,5	4,5	7,8	1,2
<b>RL (dB)</b>	8.1	8.3	13.5	11.5
Freq. (MHz)	43.5	43.5	241.0	223.0
Limit (dB)	15.6	15.6	8.2	8.5



Compliant Network Standards:  
 10BASE-T 100BASE-T4  
 1000BASE-T 2.5GBASE-T  
 ATM-25 ATM-51 ATM-155  
 100VG-AnyLan TR-4 TR-16 Active  
 TR-16 Passive