



**Cable ID/ Test ID: PCU5-10CC-0100-S-001**

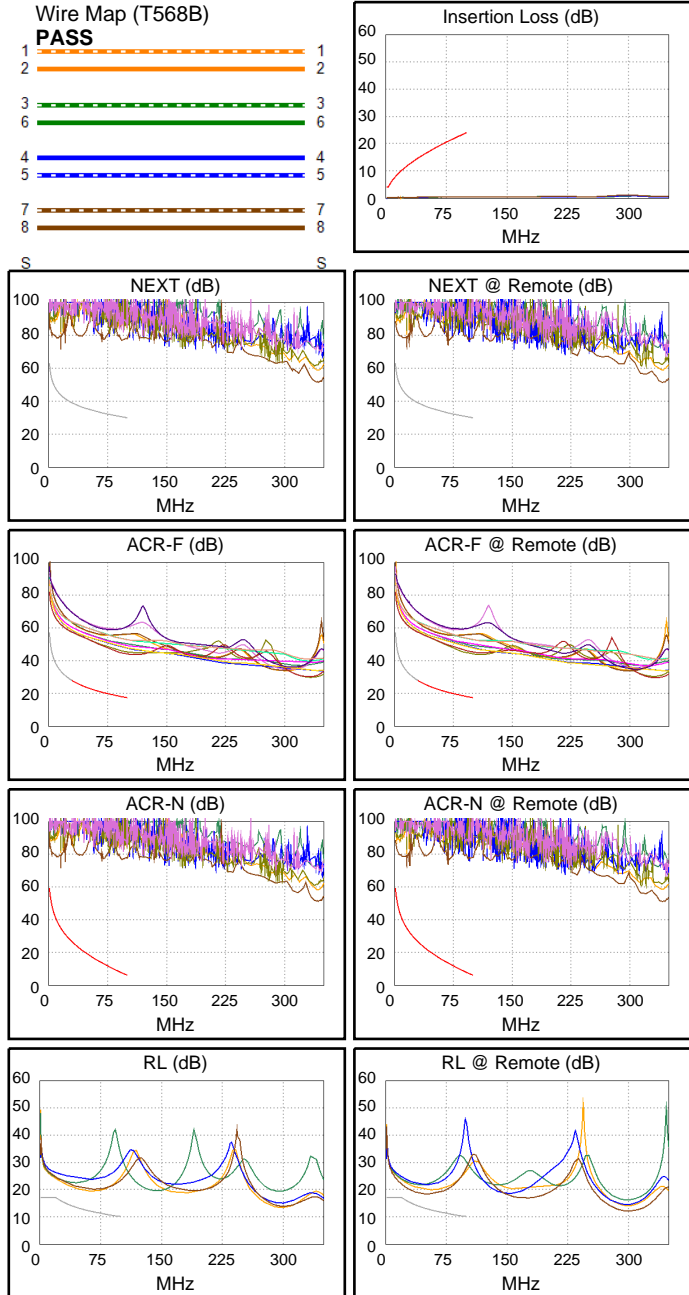
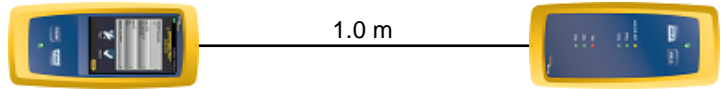
**Test Limit: ISO11801 Channel Class D**  
Limits Version: V7.11  
Date / Time: 2026/01/27 10:45:07  
Operator: Lanberg  
**Headroom 24.2 dB (NEXT 3,6-4,5)**  
Cable Type: Cat 5e U/UTP  
NVP: 69.0%

Main: Versiv  
S/N: 24410021  
Software Version: V6.14 Build 9  
Calibration Date: 2025/05/28  
Adapter: DSX-602 (DSX-CHA004)  
S/N: 25073276

**Test Summary: PASS**

Remote: Versiv  
S/N: 24250049  
Software Version: V6.14 Build 9  
Calibration Date: 2025/05/28  
Adapter: DSX-602R (DSX-CHA004)  
S/N: 25073277

Length (m), Limit 100.0	[Pair 1,2]	1.0
Prop. Delay (ns), Limit 555	[Pair 1,2]	5
Delay Skew (ns), Limit 50	[Pair 1,2]	0
Resistance (ohms), Limit 25.00	[Pair 4,5]	0.79
Insertion Loss Margin (dB)	[Pair 1,2]	23.7
Frequency (MHz)	[Pair 1,2]	100.0
Limit (dB)	[Pair 1,2]	24.0



	Worst Case Margin		Worst Case Value	
	MAIN	SR	MAIN	SR
<b>N/A</b>				
Worst Pair	3,6-4,5	3,6-4,5	3,6-4,5	3,6-4,5
<b>NEXT (dB)</b>	24.2	25.3	31.2	31.2
Freq. (MHz)	1.1	1.3	15.5	15.5
Limit (dB)	62.5	61.7	43.8	43.8
Worst Pair	3,6	3,6	3,6	3,6
<b>PS NEXT (dB)</b>	26.4	26.3	33.4	33.4
Freq. (MHz)	1.1	1.0	15.5	15.5
Limit (dB)	59.5	60.3	40.8	40.8
<b>PASS</b>				
Worst Pair	4,5-3,6	3,6-4,5	4,5-3,6	3,6-4,5
<b>ACR-F (dB)</b>	26.6	26.6	26.7	26.7
Freq. (MHz)	99.3	99.3	100.0	100.0
Limit (dB)	17.5	17.5	17.4	17.4
Worst Pair	4,5	4,5	4,5	4,5
<b>PS ACR-F (dB)</b>	28.3	28.0	28.9	28.1
Freq. (MHz)	6.3	98.3	100.0	100.0
Limit (dB)	38.5	14.6	14.4	14.4
<b>PASS</b>				
Worst Pair	3,6-4,5	3,6-4,5	3,6-4,5	3,6-4,5
<b>ACR-N (dB)</b>	28.1	29.2	40.0	40.0
Freq. (MHz)	1.1	1.3	15.5	15.5
Limit (dB)	58.5	57.7	34.9	34.9
Worst Pair	3,6	3,6	3,6	3,6
<b>PS ACR-N (dB)</b>	30.3	30.2	42.2	42.2
Freq. (MHz)	1.1	1.0	15.5	15.5
Limit (dB)	55.5	56.3	31.9	31.9
<b>N/A</b>				
Worst Pair	1,2	7,8	1,2	7,8
<b>RL (dB)</b>	6.9	4.6	7.6	5.6
Freq. (MHz)	48.3	31.3	66.8	54.3
Limit (dB)	13.2	15.1	11.8	12.7

Compliant Network Standards:  
 10BASE-T      100BASE-TX      100BASE-T4  
 1000BASE-T    2.5GBASE-T      ATM-25  
 ATM-51        ATM-155          100VG-AnyLan  
 TR-4          TR-16 Active     TR-16 Passive