



### Cable ID: PCU6-10CC-0750-BK-001

Test Limit: ISO11801 Channel Class E

Limits Version: V7.11

Date / Time: 2025/10/20 09:18:00

Operator: Impakt S.A - Serwis

Headroom 13.0 dB (NEXT 4,5-7,8)

Cable Type: Cat 6 U/UTP

NVP: 69.0%

Main: Versiv

S/N: 24410021

Software Version: V6.13 Build 2

Calibration Date: 2025/05/28

Adapter: DSX-602 (DSX-CHA004)

S/N: 25073277

### Test Summary: PASS

Remote: Versiv

S/N: 24250049

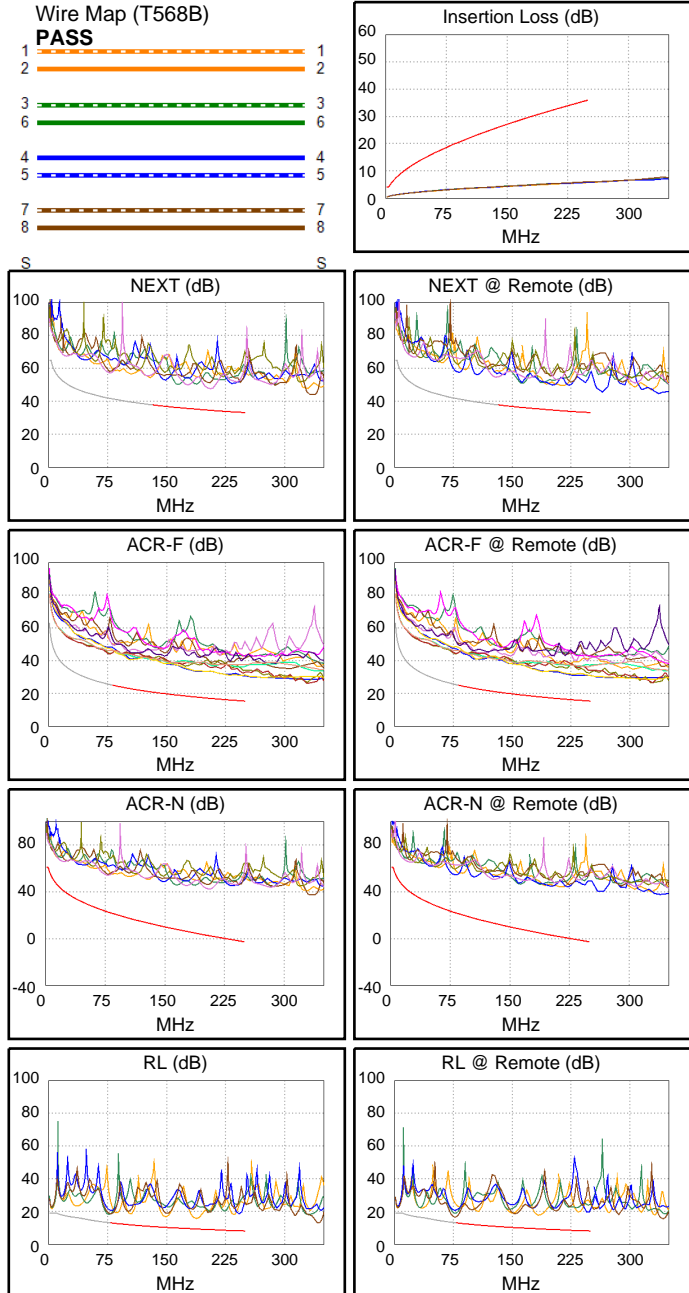
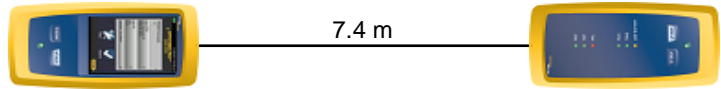
Software Version: V6.13 Build 2

Calibration Date: 2025/05/28

Adapter: DSX-602R (DSX-CHA004)

S/N: 25073276

Length (m), Limit 100.0	[Pair 1,2]	7.4
Prop. Delay (ns), Limit 555	[Pair 3,6]	38
Delay Skew (ns), Limit 50	[Pair 3,6]	2
Resistance (ohms), Limit 25.00	[Pair 3,6]	4.93
Insertion Loss Margin (dB)	[Pair 7,8]	30.0
Frequency (MHz)	[Pair 7,8]	250.0
Limit (dB)	[Pair 7,8]	35.9



Worst Case Margin Worst Case Value

PASS	MAIN	SR	MAIN	SR
Worst Pair	4,5-7,8	1,2-4,5	4,5-7,8	1,2-3,6
<b>NEXT (dB)</b>	13.0	14.5	13.1	15.3
Freq. (MHz)	206.0	162.0	206.5	214.0
Limit (dB)	34.6	36.4	34.5	34.3
Worst Pair	4,5	1,2	4,5	1,2
<b>PS NEXT (dB)</b>	14.0	14.4	14.0	14.5
Freq. (MHz)	206.0	192.0	206.0	204.0
Limit (dB)	31.6	32.2	31.6	31.7

PASS	MAIN	SR	MAIN	SR
Worst Pair	7,8-1,2	1,2-7,8	1,2-7,8	1,2-7,8
<b>ACR-F (dB)</b>	15.1	15.0	15.5	15.5
Freq. (MHz)	231.5	231.0	250.0	243.5
Limit (dB)	16.0	16.0	15.3	15.5
Worst Pair	7,8	7,8	7,8	7,8
<b>PS ACR-F (dB)</b>	17.2	16.7	17.4	16.8
Freq. (MHz)	218.0	231.5	249.5	232.0
Limit (dB)	13.5	13.0	12.3	12.9

PASS	MAIN	SR	MAIN	SR
Worst Pair	4,5-7,8	1,2-3,6	4,5-7,8	1,2-7,8
<b>ACR-N (dB)</b>	21.4	21.7	40.1	43.8
Freq. (MHz)	3.0	3.0	207.0	222.0
Limit (dB)	61.0	61.0	2.2	0.4
Worst Pair	7,8	3,6	4,5	1,2
<b>PS ACR-N (dB)</b>	22.3	22.6	41.0	43.5
Freq. (MHz)	3.4	3.8	206.0	220.5
Limit (dB)	57.7	56.9	-0.6	-2.4

PASS	MAIN	SR	MAIN	SR
Worst Pair	3,6	7,8	1,2	7,8
<b>RL (dB)</b>	5.0	3.4	6.5	3.4
Freq. (MHz)	76.5	76.8	189.0	76.8
Limit (dB)	13.2	13.1	9.2	13.1

Compliant Network Standards:  
 10BASE-T 100BASE-TX 100BASE-T4  
 1000BASE-T 2.5GBASE-T 5GBASE-T  
 ATM-25 ATM-51 ATM-155  
 100VG-AnyLan TR-4 TR-16 Active  
 TR-16 Passive