



Cable ID: PCF6-10CU-2000

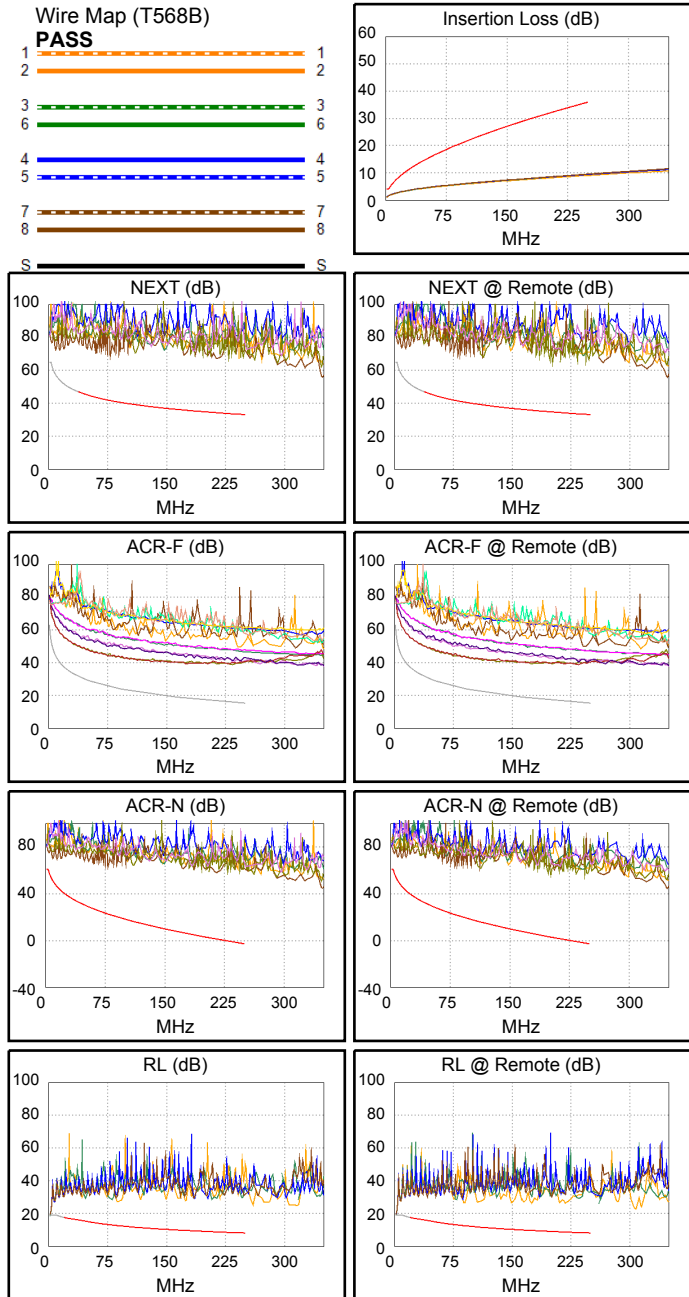
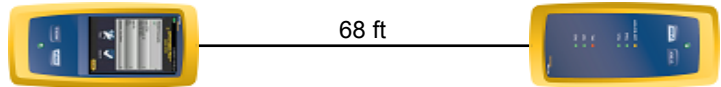
Test Limit: ISO11801 Channel Class E
Limits Version: V7.9
Date / Time: 08/08/2025 09:56:34 AM
Operator: QC
Headroom 26.8 dB (NEXT 3,6-4,5)
Cable Type: *cat 6 S/FTP*
NVP: 76.0%

Main: Versiv
S/N: 1824298
Software Version: V6.11 Build 2
Calibration Date: 12/27/2024
Adapter: DSX-8000 (DSX-CHA804)
S/N: 22211877

Test Summary: PASS

Remote: Versiv
S/N: 1820302
Software Version: V6.11 Build 2
Calibration Date: 12/27/2024
Adapter: DSX-8000R (DSX-CHA804)
S/N: 22211865

Length (ft), Limit 328	[Pair 1,2]	68
Prop. Delay (ns), Limit 555	[Pair 3,6]	93
Delay Skew (ns), Limit 50	[Pair 3,6]	2
Resistance (ohms), Limit 25.00	[Pair 7,8]	7.27
Insertion Loss Margin (dB)	[Pair 7,8]	26.4
Frequency (MHz)	[Pair 7,8]	250.0
Limit (dB)	[Pair 7,8]	35.9



Worst Case Margin Worst Case Value

PASS	MAIN	SR	MAIN	SR
Worst Pair	3,6-4,5	3,6-4,5	3,6-4,5	3,6-7,8
NEXT (dB)	26.8	27.7	32.5	30.2
Freq. (MHz)	78.3	80.8	215.0	201.5
Limit (dB)	41.7	41.5	34.2	34.7
Worst Pair	3,6	3,6	3,6	3,6
PS NEXT (dB)	29.2	29.2	34.2	32.3
Freq. (MHz)	49.0	37.8	215.5	201.5
Limit (dB)	42.4	44.3	31.3	31.8

PASS	MAIN	SR	MAIN	SR
Worst Pair	3,6-4,5	4,5-3,6	3,6-4,5	4,5-3,6
ACR-F (dB)	17.6	17.7	23.0	22.8
Freq. (MHz)	4.3	4.3	235.0	234.0
Limit (dB)	50.7	50.7	15.8	15.9
Worst Pair	3,6	3,6	3,6	3,6
PS ACR-F (dB)	20.0	20.0	24.4	23.7
Freq. (MHz)	9.1	9.1	234.0	235.0
Limit (dB)	41.1	41.1	12.9	12.8

PASS	MAIN	SR	MAIN	SR
Worst Pair	3,6-4,5	3,6-4,5	3,6-4,5	3,6-7,8
ACR-N (dB)	15.3	15.2	56.9	53.5
Freq. (MHz)	3.1	4.0	215.0	201.5
Limit (dB)	60.8	58.9	1.2	2.9
Worst Pair	4,5	3,6	3,6	3,6
PS ACR-N (dB)	17.2	16.6	61.9	60.6
Freq. (MHz)	3.4	4.0	247.0	247.5
Limit (dB)	57.7	56.4	-5.4	-5.5

PASS	MAIN	SR	MAIN	SR
Worst Pair	7,8	4,5	1,2	1,2
RL (dB)	12.5	12.9	14.6	17.2
Freq. (MHz)	19.3	19.1	88.3	218.5
Limit (dB)	17.6	17.6	12.5	8.6

Compliant Network Standards:
 10BASE-T 100BASE-TX 100BASE-T4
 1000BASE-T 2.5GBASE-T 5GBASE-T
 ATM-25 ATM-51 ATM-155
 100VG-AnyLan TR-4 TR-16 Active
 TR-16 Passive