



**Cable ID: PCF6-10CU-0300**

Test Limit: ISO11801 Channel Class E

Limits Version: V7.9

Date / Time: 08/08/2025 10:18:12 AM

Operator: QC

Headroom 21.0 dB (NEXT 3,6-4,5)

Cable Type: \*cat 6 S/FTP\*

NVP: 76.0%

Main: Versiv

S/N: 1824298

Software Version: V6.11 Build 2

Calibration Date: 12/27/2024

Adapter: DSX-8000 (DSX-CHA804)

S/N: 22211877

**Test Summary: PASS**

Remote: Versiv

S/N: 1820302

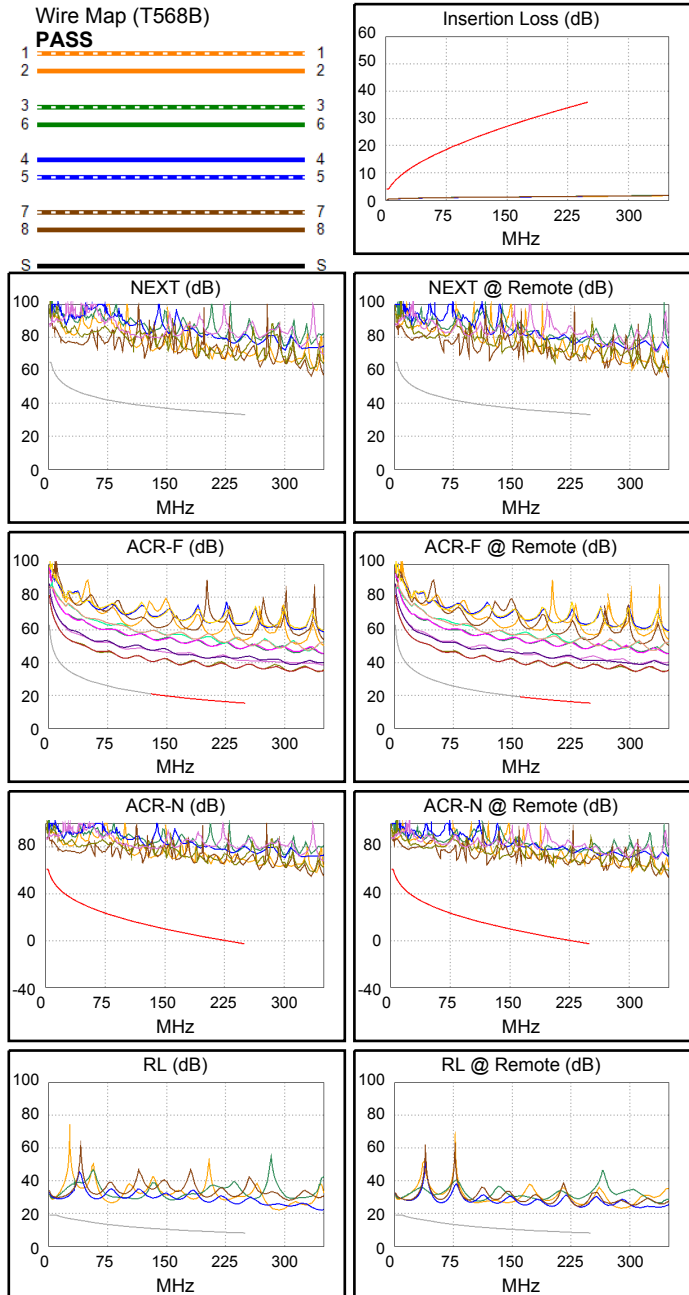
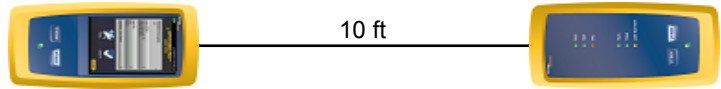
Software Version: V6.11 Build 2

Calibration Date: 12/27/2024

Adapter: DSX-8000R (DSX-CHA804)

S/N: 22211865

Length (ft), Limit 328	[Pair 1,2]	10
Prop. Delay (ns), Limit 555	[Pair 3,6]	14
Delay Skew (ns), Limit 50	[Pair 1,2]	0
Resistance (ohms), Limit 25.00	[Pair 1,2]	1.66
Insertion Loss Margin (dB)	[Pair 3,6]	34.4
Frequency (MHz)	[Pair 3,6]	250.0
Limit (dB)	[Pair 3,6]	35.9



Worst Case Margin Worst Case Value

N/A	MAIN	SR	MAIN	SR
Worst Pair	4,5-7,8	3,6-4,5	3,6-7,8	3,6-4,5
<b>NEXT (dB)</b>	21.8	21.0	31.2	31.3
Freq. (MHz)	1.9	3.0	238.5	236.0
Limit (dB)	65.0	65.0	33.5	33.5
Worst Pair	4,5	3,6	3,6	3,6
<b>PS NEXT (dB)</b>	22.6	21.1	32.8	31.3
Freq. (MHz)	3.1	3.5	238.5	204.5
Limit (dB)	62.0	61.5	30.5	31.7

PASS	MAIN	SR	MAIN	SR
Worst Pair	3,6-4,5	3,6-4,5	3,6-4,5	4,5-3,6
<b>ACR-F (dB)</b>	19.0	19.0	20.9	20.8
Freq. (MHz)	21.6	21.6	240.0	238.5
Limit (dB)	36.6	36.6	15.7	15.7
Worst Pair	3,6	3,6	3,6	3,6
<b>PS ACR-F (dB)</b>	21.2	21.0	22.9	22.7
Freq. (MHz)	24.5	22.9	240.0	240.0
Limit (dB)	32.5	33.1	12.7	12.7

PASS	MAIN	SR	MAIN	SR
Worst Pair	4,5-7,8	3,6-4,5	3,6-7,8	3,6-4,5
<b>ACR-N (dB)</b>	25.6	24.8	64.8	64.7
Freq. (MHz)	1.9	3.0	238.5	236.0
Limit (dB)	61.0	61.0	-1.5	-1.2
Worst Pair	4,5	3,6	3,6	3,6
<b>PS ACR-N (dB)</b>	26.4	24.9	66.4	66.0
Freq. (MHz)	3.1	3.5	238.5	236.5
Limit (dB)	58.0	57.5	-4.5	-4.3

N/A	MAIN	SR	MAIN	SR
Worst Pair	1,2	1,2	4,5	4,5
<b>RL (dB)</b>	9.6	9.4	17.6	15.6
Freq. (MHz)	5.1	4.6	239.0	239.0
Limit (dB)	19.0	19.0	8.2	8.2

Compliant Network Standards:  
 10BASE-T 100BASE-TX 100BASE-T4  
 1000BASE-T 2.5GBASE-T 5GBASE-T  
 ATM-25 ATM-51 ATM-155  
 100VG-AnyLan TR-4 TR-16 Active  
 TR-16 Passive