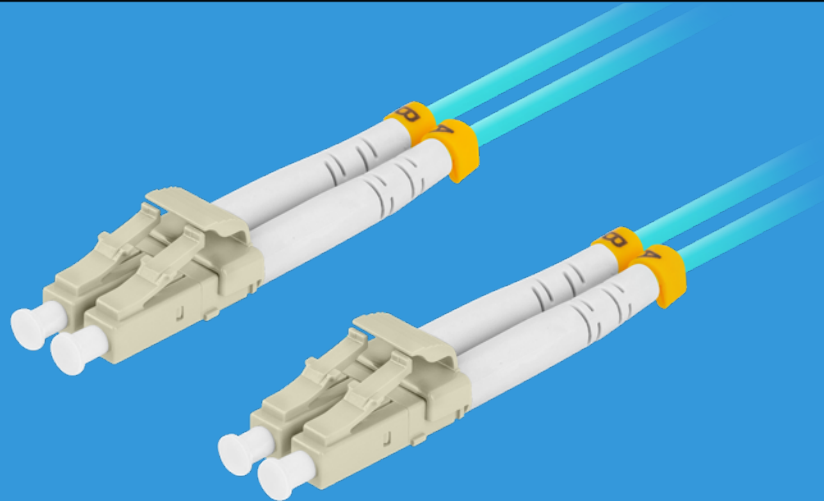


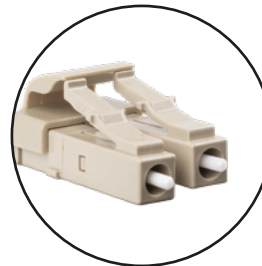
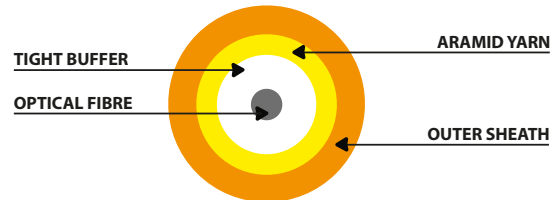
FO-LULU-MD31-0___-TQ

FIBER OPTIC PATCHCORD



PRODUCT SPECIFICATION:

- Connector type: LC
- Polishing standard: UPC - ULTRA PHYSICAL CONTACT
- Fiber type: OM3
- Type of optical fiber: multimode (MM)
- Fiber diameter: 50/125 μm
- Cable Construction: DUPLEX
- Cable diameter: 3.0 mm
- Coating: LSZH, LSOH (Low smoke zero halogen)
- Insertion loss: $\leq 0,20$ dB
- Return loss: ≥ 30 dB
- Operating temperature: $-40 - 85^{\circ}\text{C}$
- Minimum bend radius: 7.5 mm
- Color: aqua
- Cable length: 1 m, 2 m, 3 m, 5 m



CAT.NO	FULL NAME
FO-LULU-MD31-0010-TQ	FIBER OPTIC PATCHCORD MM LC/UPC-LC/UPC DUPLEX 3.0MM OM3 50/125 LSZH 1M AQUA LANBERG
FO-LULU-MD31-0020-TQ	FIBER OPTIC PATCHCORD MM LC/UPC-LC/UPC DUPLEX 3.0MM OM3 50/125 LSZH 2M AQUA LANBERG
FO-LULU-MD31-0030-TQ	FIBER OPTIC PATCHCORD MM LC/UPC-LC/UPC DUPLEX 3.0MM OM3 50/125 LSZH 3M AQUA LANBERG
FO-LULU-MD31-0050-TQ	FIBER OPTIC PATCHCORD MM LC/UPC-LC/UPC DUPLEX 3.0MM OM3 50/125 LSZH 5M AQUA LANBERG